



ORANGE COUNTY
COASTKEEPER®

**MPA
Watch Program**

By: Kelsi Bailey

The background of the slide is a light blue gradient. It is decorated with several realistic water droplets of various sizes, some with highlights and shadows, giving them a 3D appearance. The droplets are scattered across the slide, with a higher concentration in the top left and bottom right corners.

ORANGE COUNTY COASTKEEPER'S MISSION

“TO PROTECT AND PRESERVE THE REGION’S WATERSHED AND MARINE HABITATS
THROUGH EDUCATION, RESTORATION, RESEARCH, ADVOCACY, AND
ENFORCEMENT.”

“OUR ULTIMATE VISION IS TO DEVELOP SOLUTIONS TO ENSURE CLEAN
WATERWAYS, HARBORS AND COASTAL WATERS AS WELL AS SAFE, CONSISTENT,
AND ADEQUATE WATER SUPPLY”

How We Accomplish Our Mission

Develop water quality solutions to meet the needs of both the environment and community

Implement actions and programs that have well-defined, measurable results

Increased environmental awareness among citizens, students, policy makers, and business communities

Ensure compliance with the federal clean water act as well as state, local, and federal environmental regulations

Conduct research to identify pollution impacts and provide evidence to enforce regulations

We use a regional, collaborative approach to watershed management

THE MARINE LIFE PROTECTION ACT (MLPA)

THE MLPA WAS PASSED IN 1999 REQUIRING THE REEVALUATION OF ALL EXISTING MARINE PROTECTED AREAS (MPAS) AND THE REDESIGN OF NEW MPAS TO FIT CALIFORNIA'S CHANGING NEEDS.



Purpose: Improve the array of MPAs existing in California waters through the adoption of a comprehensive master plan.

By: Brian Gratwicke, 2011. (CC BY 2.0)

WHAT IS AN MPA?

A marine protected area is a discrete geographic marine or estuarine area designed to protect or conserve marine life and habitat.



Benefits of these areas include:

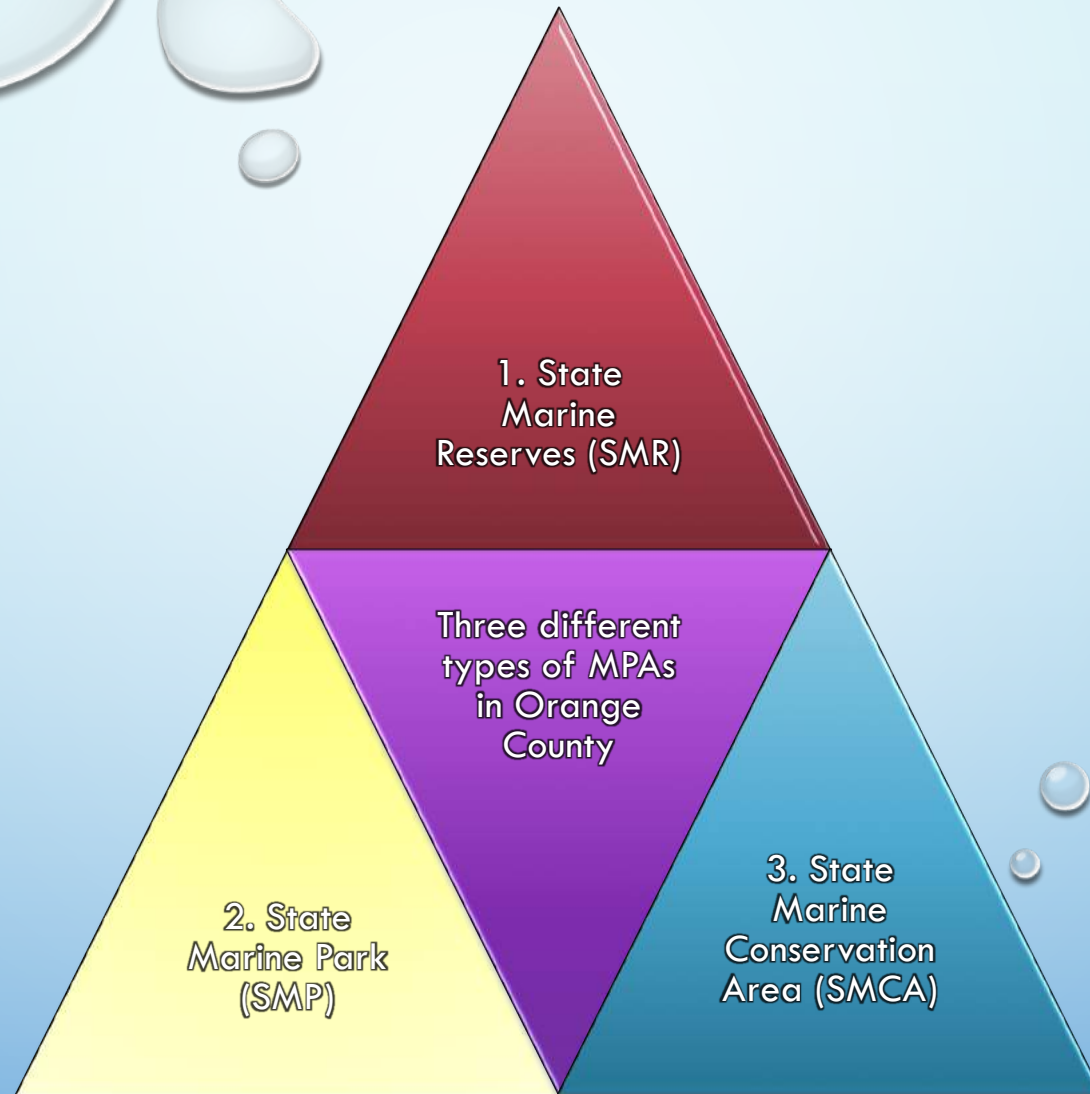
- An increase in biomass or the mass of plants and animals
- Overall increase in population density of plants and animals in a given area -increased animal body size
- Increase in overall species diversity

There are three different types of MPAs in Orang County:

1. State Marine Reserves (SMR): No taking of anything
2. State Marine Park (SMP): Only recreational taking
3. State Marine Conservation Area (SMCA): May allow recreational or commercial taking (depends)

By: NOAA's National Ocean Service, 2010 (public)

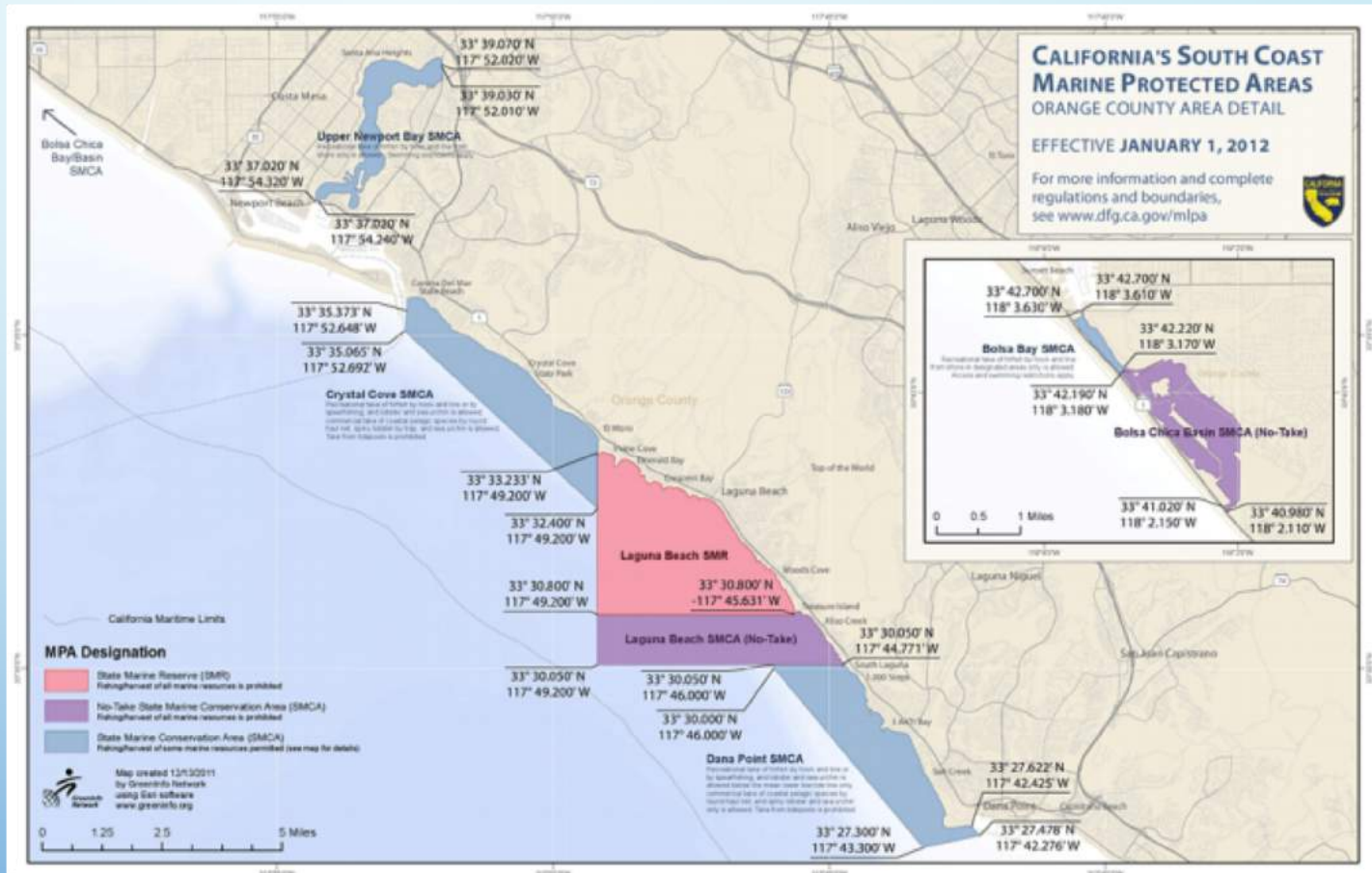
WHAT IS AN MPA? (cont.)



MPAs WITHIN ORANGE COUNTY

1. Bolsa Bay SMCA
2. Bolsa Chica Basin SMCA
3. Crystal Cove SMCA
4. Dana Point SMCA
5. Laguna Beach SMCA
6. Laguna Beach SMR
7. Upper Newport Bay SMCA

There are 35 monitoring sites in the seven MPAs covered by the Orange County MPA Watch program.



ORANGE COUNTY MPA REGULATIONS (SIMPLIFIED)

Bolsa Bay SMCA

Recreational take of finfish by hook and line only from designated areas.

Bolsa Basin SMCA

No taking

Upper Newport Bay SMCA

Fishing from shore using hook and line only in designated areas

Crystal Cove and Dana Point SMCA

No taking from tide pools

Laguna Beach Reserve and SMCA

No taking

ORANGE COUNTY MPA WATCH SURVEYS

Crystal
Cove

Big Corona

Little Corona *

Morning Canyon

Pelican

Los Trancos

Reef Point

Upper
Newport
Bay

North Star Beach

Castaways *

Rocky Point

Jamboree Bridge

Dana
Point

Totuava

Thousand Steps

Three Arch Bay

Salt Creek

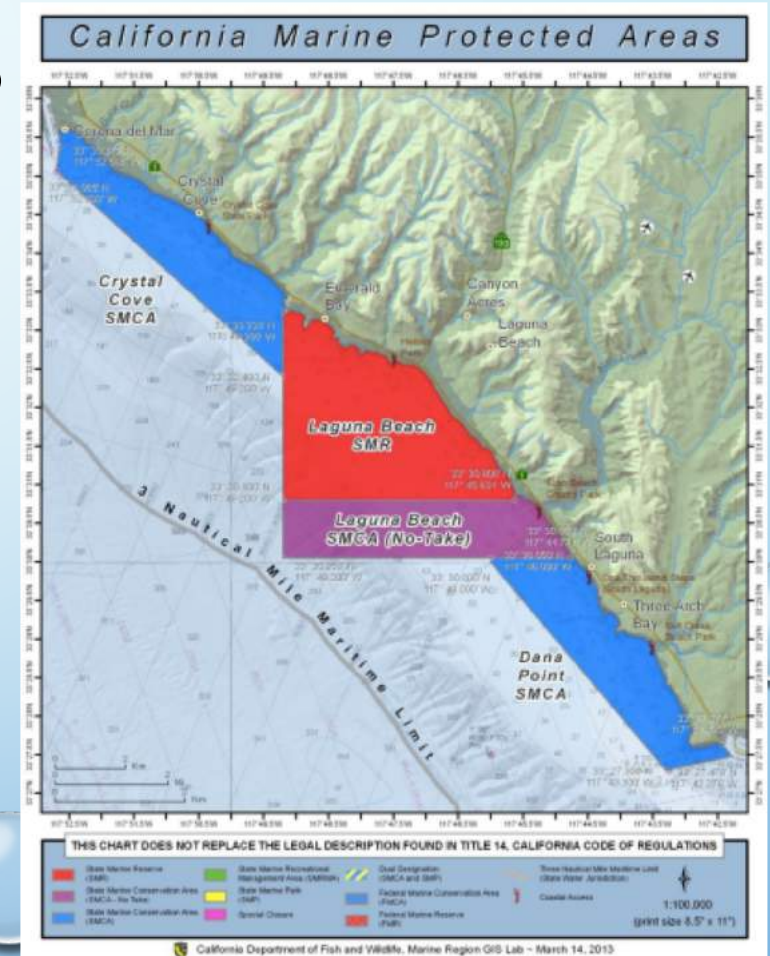
Dana Point

Strands

* Priority Monitoring Sites

ORANGE COUNTY MPA WATCH SURVEYS

Laguna Beach	Crescent *
	Shaws *
	Fisherman's Cove
	Heisler
	Main
	Bluebird
	Woods
	Moss Point *
	Victoria
	Montage
	Aliso Beach*
	West Beach
	Table Rock *



* Priority Monitoring Sites

PARTICIPATING ORGANIZATIONS

City of Dana Point

City of Laguna Beach

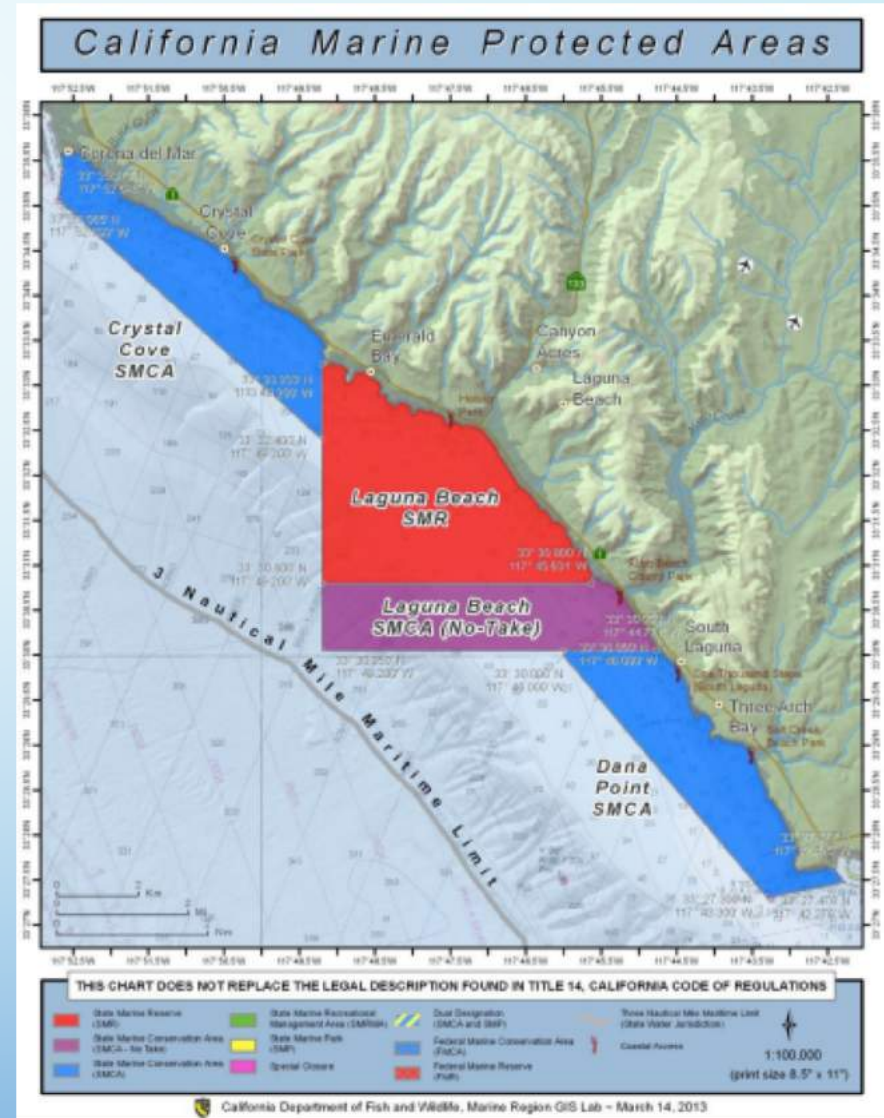
City of Newport Beach

Ocean Institute

Crystal Cove Alliance

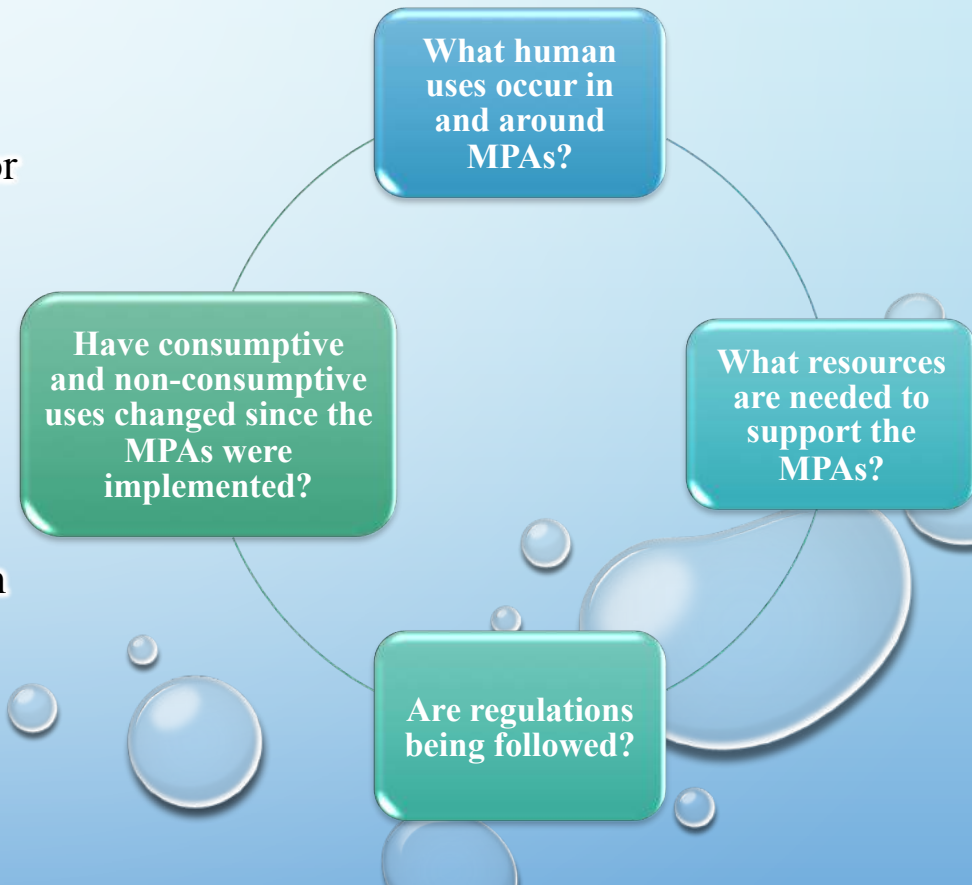
Ocean Quest

Eco Adventure Center at the Ritz Carlton
Laguna Niguel



THE MPA WATCH PROGRAM

- Volunteer based program that enlists volunteers, community groups, and local government to monitor human uses in and around the MPAs
- Groups or volunteers are assigned to specific monitoring locations to record observed activities in hopes of addressing the following:



DATA SHEET & OBSERVABLE ACTIVITIES



By: Williami5,
(CC BY 2.0)

Consumptive

- Rod/Reel Fishing
- Hand Collection
- Kelp Harvesting
- Private Vessel with Rod/Reel
- Charter Fishing Boat
- Lobster Fishing Boat
- Trap Fishing
- Spear Fishing



By: Eon60, (CC BY-SA 2.0)

Non-Consumptive

- Beach Recreation
- Tide pooling (not collecting)
- Dogs on/off Leash
- Swimming/Wading
- Whale Watching Boat
- Boating
- Surfing
- Wildlife Watching

MPA WATCH PROGRAM

Survey segments are coves or segments of sandy beaches. Surveys take several minutes to half an hour to complete

Surveys are done by walking on a beach or observing from a vantage point, recording both on and off shore activities

Surveys occur at varying intervals, data reports are produced quarterly



By: Sharon Mollerus, (CC BY 2.0)



By: Chris Clogg, (public)

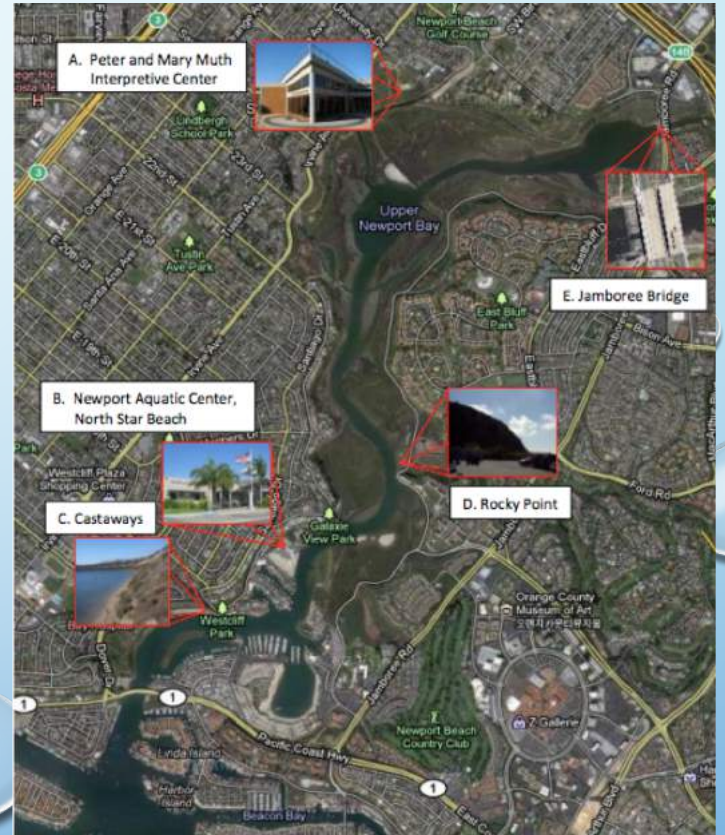
NECESSARY PROVIDED EQUIPMENT



Clipboard and Data Sheet



Binoculars



Map

OPTIONAL EQUIPMENT



Camera



Sunscreen



Cell Phones



Jackets/Outerwear

STATEWIDE MPA WATCH WEBSITE



[MPA Watch](#)

- **Learn more about MPA watch**
- **View the MPA map**
- **Explore data**

OCCK MPA WATCH DATA SHEET 2017

MPA Watch Data Sheet



Name(s):		Date: ____/____/____	Transect ID:
Start Time:	End Time:	Clouds: clear (0%)/ partly cloudy (1-50%)/ cloudy (>50%cover)	Precipitation: yes / no
Air Temperature: cold / cool / mild / warm / hot		Wind: calm / breezy / windy	Tide Level: low / med / high
Visibility: perfect / limited / shore only		Beach Status: open / posted / closed / unknown	
On-Shore Activities		Rocky	Sandy
Recreation (walking, resting, playing, etc. NOT tidepooling)			
Wildlife Watching			
Domestic animals on-leash			
Domestic animals off-leash			
Driving on the Beach			
Tide-pooling (not collecting)			
Hand collection of biota			
Shore-based hook and line fishing			
Shore-based trap fishing			
Shore-based net fishing			
Shore-based spear fishing			
Off-Shore Activities (Non-Boating)			
Offshore Recreation (e.g., swimming, bodysurfing)			
Board Sports (e.g., boogie boarding, surfing)			
Stand-Up Paddle Boarding			
Non-Consumptive SCUBA and snorkeling			
Spear Fishing (free diving or SCUBA)			
Other Consumptive Diving (e.g., nets, poles, traps)			

DATA SHEET: ONSHORE CONSUMPTION

Hand Collection



By: Linda,
sfbaynatureplay

Rod Fishing



By: Michael Coghlan, (CC
BY-SA 2.0)

DATA SHEET: ONSHORE NON-CONSUMPTIVE

Dogs On/Off Leash



By: Romain Pailler,
(Public)

Beach Recreation



By: Frankieleon, (CC BY 2.0)

DATA SHEET: OFFSHORE CONSUMPTION

Trap Fishing



By: Dawn Scranton, (CC BY 2.0)

Kayaking with Rod Fishing



By: Jassen, (CC BY 2.0)

DATA SHEET: OFFSHORE NON-CONSUMPTIVE

Underwater Scuba-diving: Diving Floats & Hookah Gear



By: Jeff, (CC BY 2.0)



By: Innovative Scuba Concepts



By: Dixie Divers

DATA SHEET: TYPES OF BOATS

Party/Charter Fishing Boat



By: Fish On – Private Charters

Trolling Fishing Boat



By: Fish Mauritius

Trolling is a method of fishing where one or more fishing lines, baited with lures or bait fish, are drawn through the water.

DATA SHEET: TYPES OF BOATS

Lobster Fishing Boat



By: Shiphotos, Paul Beesley

Purse-Seine Fishing Boat



By: National Geographic
Society

DATA SHEET: TYPES OF BOATS

Kelp Harvesting Vessel



By: Bennilover (CC BY-ND 2.0)

DO'S AND DON'TS OF MPA WATCH:

Do



- ☐ Have fun
- ☐ Be accurate
- ☐ Submit your data online
- ☐ Report potential violations
 - Cal Tip: (888) 334-2258

Don't



- ☐ Compromise your safety or the safety of others
- ☐ Confront anyone

THANK YOU



ORANGE COUNTY
COASTKEEPER®

If you have any questions, please follow the
link below

[OC CoastKeeper](#)
or give us a call at
(714) 850-1965