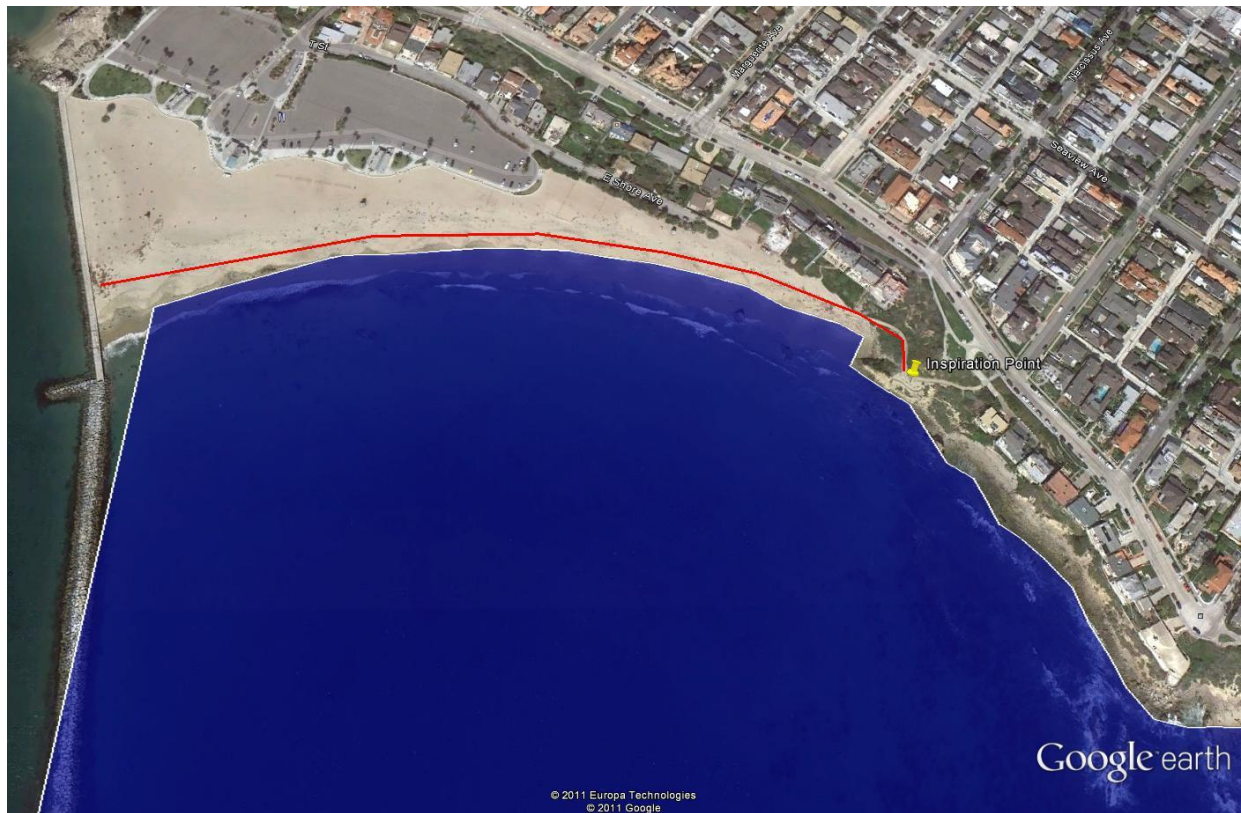


CRYSTAL COVE SMCA

Newport Beach Section: Big Corona, Little Corona, Morning Canyon

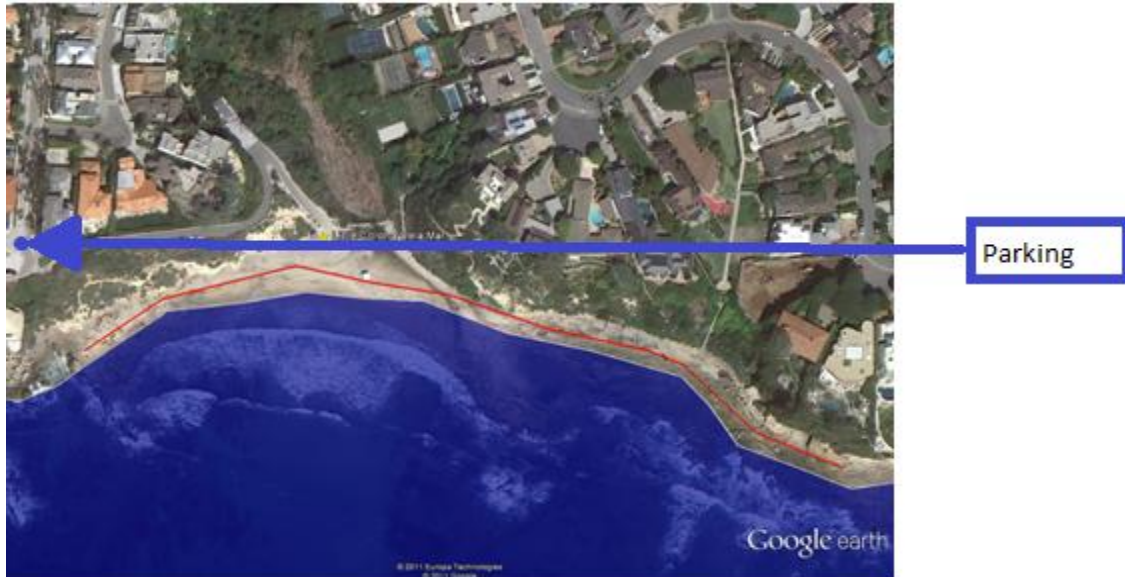
Big Corona Del Mar



Directions from OCCK:

1. Head Southwest on Airway Ave toward Baker St.
2. Take the first right onto Baker St.
3. Turn left onto CA 73 S/ CA 55 S
4. Keep left at the fork and merge onto CA-73 s
5. Take the exit 14A to merge onto MacArthur Blvd toward Newport Beach
6. Turn left onto PCH
7. Turn right onto Marguerite Ave
8. Turn right onto Ocean Blvd
9. Park on street in residential area.

Little Corona Del Mar



From Big Corona:

1. Head Southeast on Ocean Blvd. toward Poppy Ave
2. Park on street near intersection of Poppy and Ocean

From OCCK office:

1. Head Southwest on Airway Ave toward Baker St.
2. Take the first right onto Baker St.
3. Turn left onto CA 73 S/ CA 55 S
4. Keep left at the fork and merge onto CA-73 s
5. Take the exit 14A to merge onto MacArthur Blvd toward Newport Beach
6. Turn left onto PCH
7. Turn right onto Poppy Ave\
8. Park on street near intersection of Poppy and Ocean

Morning Canyon



Access From Little Corona Del Mar Beach during low tide.

Crystal Cove

Crystal Cove State Park Section: Pelican Point, Los Trancos, Reef Point

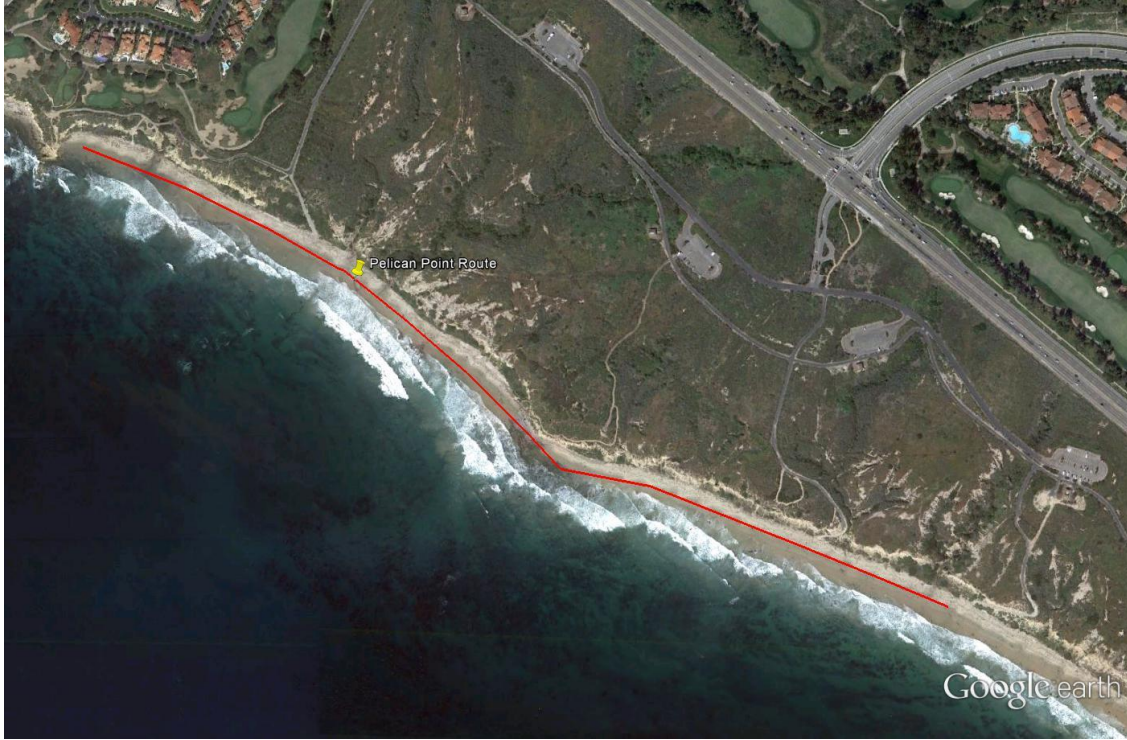


Direction from OCKK office:

1. Head southwest on Airway Ave toward Baker St
2. Take the 1st right onto Baker St
3. Turn left onto the CA 73 S/ CA55 S
4. Keep left at the fork and merge onto CA 73 S
5. Take exit 14A to merge onto MacArthur Blvd toward Newport Beach
6. Turn left onto PCH
7. Turn right onto Cameo Shores Rd
8. Park on street in residential area

Access all sites from here, Suggest dropping off a second team at Reef Point and meeting at Los Trancos.

Pelican



Los Trancos



Reef Point

